

Features

- Split Gate Trench MOSFET technology
- Excellent package for heat dissipation
- High density cell design for low RDS(ON)

Product Summary

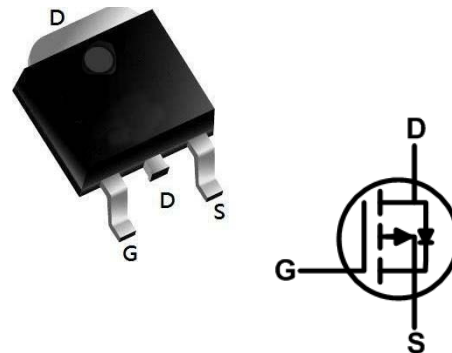


BVDSS	RDS(ON)	ID
-100V	45mΩ	-30A

Applications

- Hard switched and high frequency circuits
- Power management
- Battery Switching Application

TO252-3L Pin Configuration



Absolute Maximum Ratings:

Symbol	Parameter	Value	Units
V _{DSS}	Drain-to-Source Voltage	-100	V
I _D	Continuous Drain Current	T _C = 25 °C	-30
	Continuous Drain Current	T _C = 100 °C	-17.8
I _{DM} ^{a1}	Pulsed Drain Current	-112	A
E _{AS} ^{a2}	Single pulse avalanche energy	225	mJ
I _{AR}	Single pulse avalanche current	30	A
V _{GS}	Gate-to-Source Voltage	±20	V
P _D	Power Dissipation	83	W
T _J , T _{stg}	Operating Junction and Storage Temperature Range	150, -55 to 150	°C
T _L	Maximum Temperature for Soldering	260	°C

Thermal Characteristics:

Symbol	Parameter	Value	Units
R _{θJC}	Thermal Resistance, Junction-to-Case	1.5	°C/W
R _{θJA}	Thermal Resistance, Junction-to-Ambient	102	°C/W

Electrical Characteristics (TA= 25°C unless otherwise specified):

Static Characteristics						
Symbol	Parameter	Test Conditions	Value			Units
			Min.	Typ.	Max.	
V _{DSS}	Drain to Source Breakdown Voltage	V _{GS} =0V, I _D =-250μA	-100	--	--	V
I _{DSS}	Drain to Source Leakage Current	V _{DS} =-100V, V _{GS} =0V	--	--	1	μA
I _{GSS(F)}	Gate to Source Forward Leakage	V _{GS} =-20V, V _{DS} =0V	--	--	100	nA
I _{GSS(R)}	Gate to Source Reverse Leakage	V _{GS} =+20V, V _{DS} =0V	--	--	-100	nA
V _{GS(TH)}	Gate Threshold Voltage	V _{DS} =V _{GS} , I _D =-250μA	-1.5	-2.0	-2.5	V
R _{DS(ON)1}	Drain-to-Source Resistance	On- V _{GS} =-10V, I _D =-20A	--	45	55	mΩ
R _{DS(ON)2}	Drain-to-Source Resistance	On- V _{GS} =-4.5V, I _D =-10A	--	55	65	mΩ

Dynamic Characteristics						
Symbol	Parameter	Test Conditions	Value			Units
			Min.	Typ.	Max.	
C _{iss}	Input Capacitance	V _{GS} = 0V	--	2100	--	pF
C _{oss}	Output Capacitance	V _{DS} = -50V	--	168	--	
C _{rss}	Reverse Transfer Capacitance	f = 1.0MHz	--	26	--	
R _g	Gate resistance	V _{GS} = 0V, V _{DS} Open	--	2.8	--	Ω

Resistive Switching Characteristics						
Symbol	Parameter	Test Conditions	Value			Units
			Min.	Typ.	Max.	
t _{d(ON)}	Turn-on Delay Time	I _D = -20A V _{DS} = -50V V _{GS} = -10V R _G = 5Ω	--	8.2	--	ns
t _r	Rise Time		--	19.6	--	
t _{d(OFF)}	Turn-Off Delay Time		--	62.8	--	
t _f	Fall Time		--	41.4	--	
Q _g	Total Gate Charge	V _{GS} = -10V	--	38	--	nC
Q _{gs}	Gate Source Charge	V _{DS} = -50V	--	6.4	--	
Q _{gd}	Gate Drain Charge	I _D = -20A	--	6.8	--	

Source-Drain Diode Characteristics						
Symbol	Parameter	Test Conditions	Value			Units
			Min.	Typ.	Max.	
V _{SD}	Diode Forward Voltage	I _S =-20A, V _{GS} =0V	--	--	-1.2	V
t _{rr}	Reverse Recovery time	I _S =-20A, V _{DD} =-50V	--	68	--	ns
Q _{rr}	Reverse Recovery Charge	dI/dt=100A/μs	--	200	--	nC

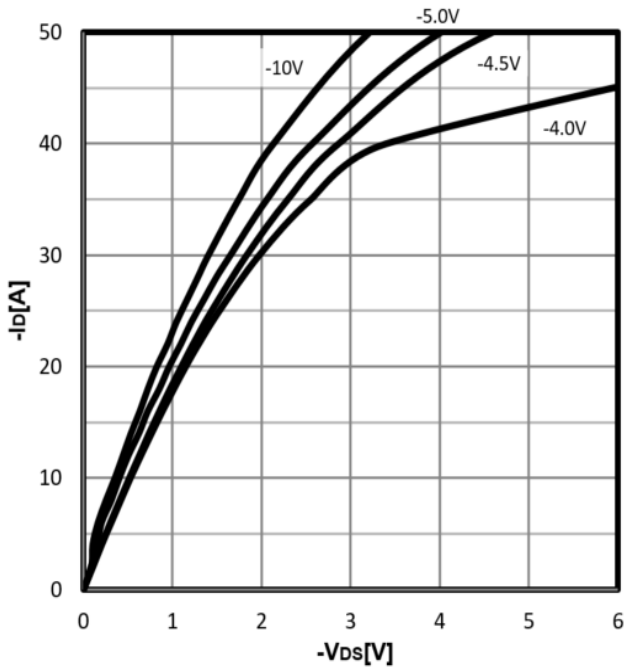
a1: Repetitive rating; pulse width limited by maximum junction temperature

a2: L=0.5mH, R_g=25Ω, Starting T_J=25 °C

Characteristics Curve:

Typ. output characteristics

$$-I_D = f(-V_{DS})$$



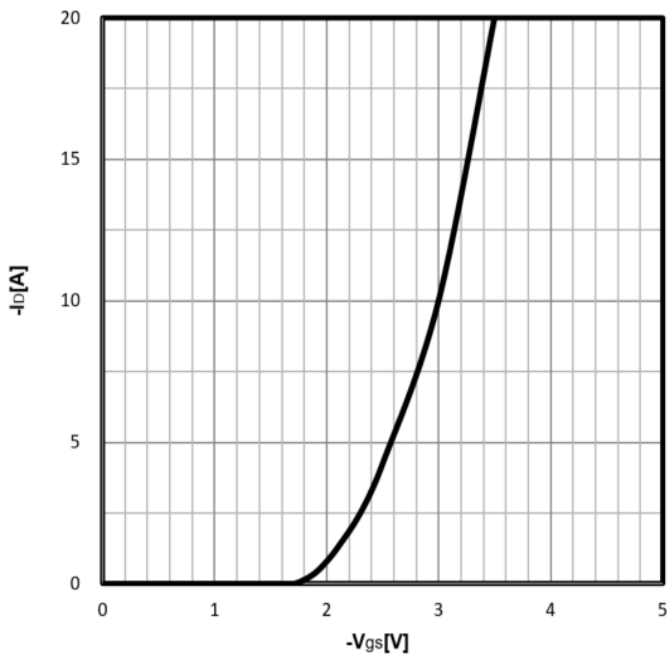
Typ. drain-source on resistance

$$R_{DS(on)} = f(-I_D)$$



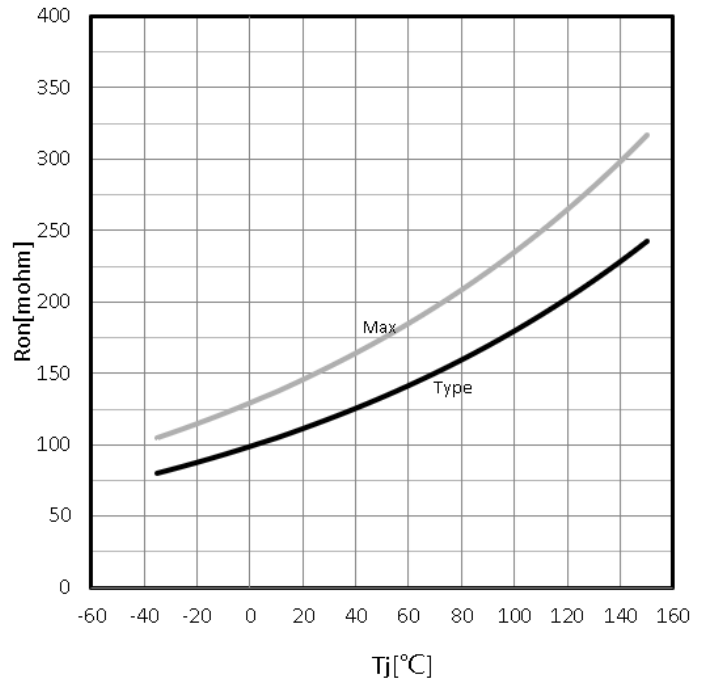
Typ. transfer characteristics

$$-I_D = f(-V_{GS})$$

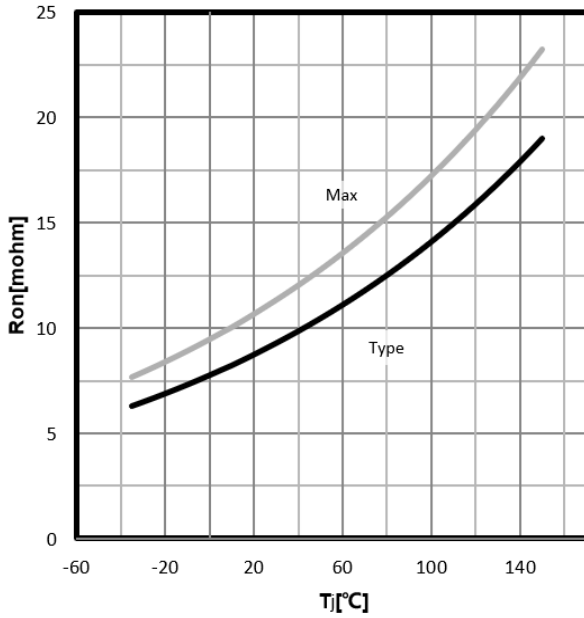


Drain-source on-state resistance

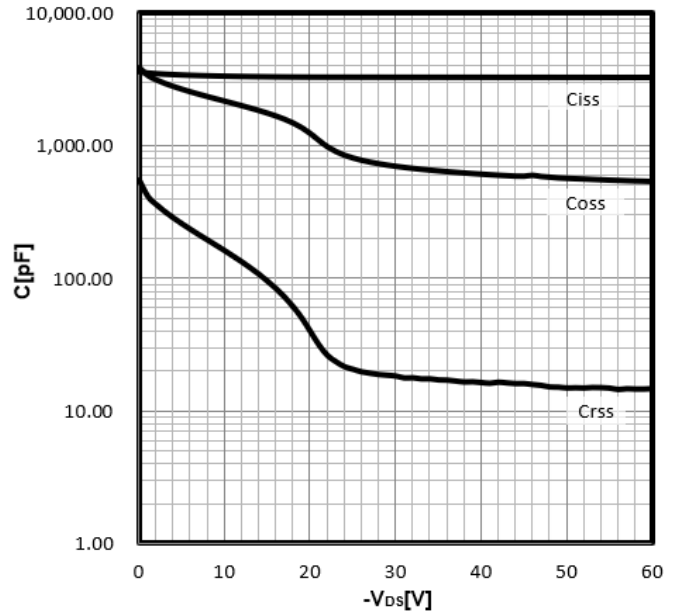
$$R_{DS(on)} = f(T_j); I_D = -5A; V_{GS} = -10V$$



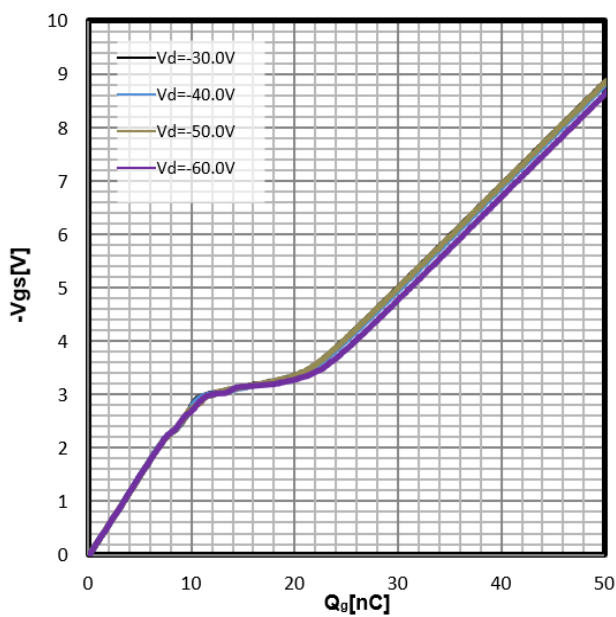
Drain-source on-state resistance
 $R_{DS(on)}=f(T_j)$; $I_D=-20A$; $V_{GS}=-10V$



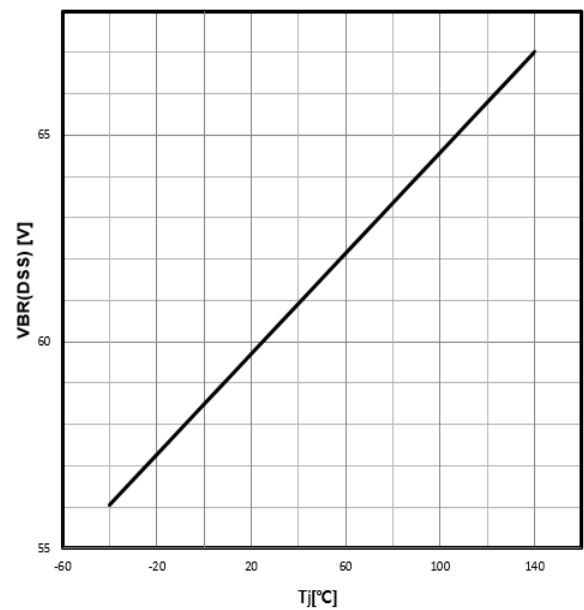
Typ. capacitances
 $C=f(V_{DS})$; $V_{GS}=0V$; $f=1MHz$



Typ. gate charge
 $V_{GS}=f(Q_{gate})$; $I_D=-20A$

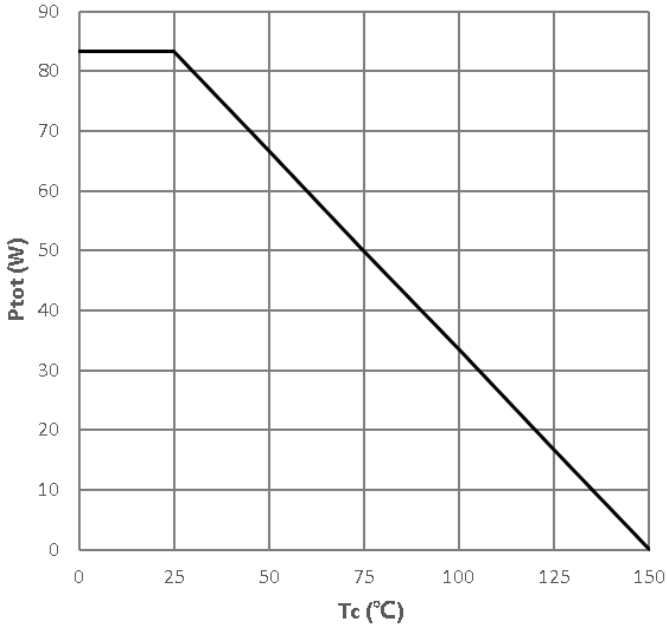


Drain-source breakdown voltage
 $V_{BR(DSS)}=f(T_j)$; $I_D=-250uA$

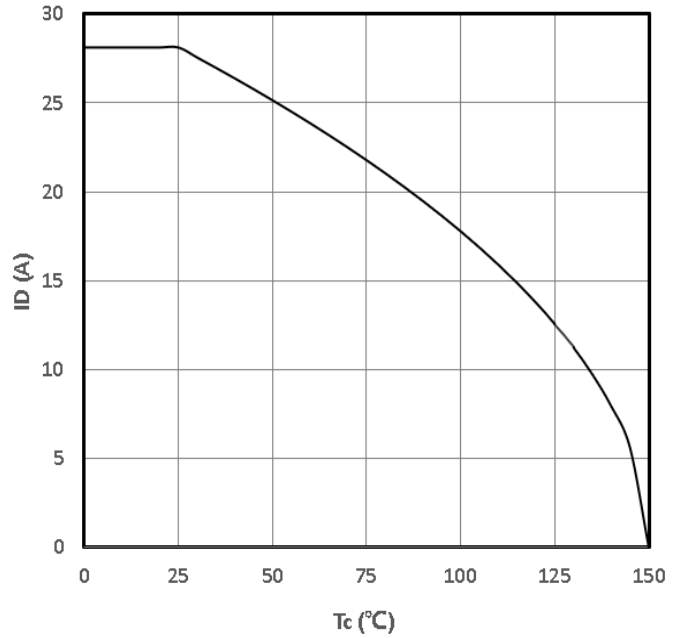


P-Ch 100V Fast Switching MOSFETs

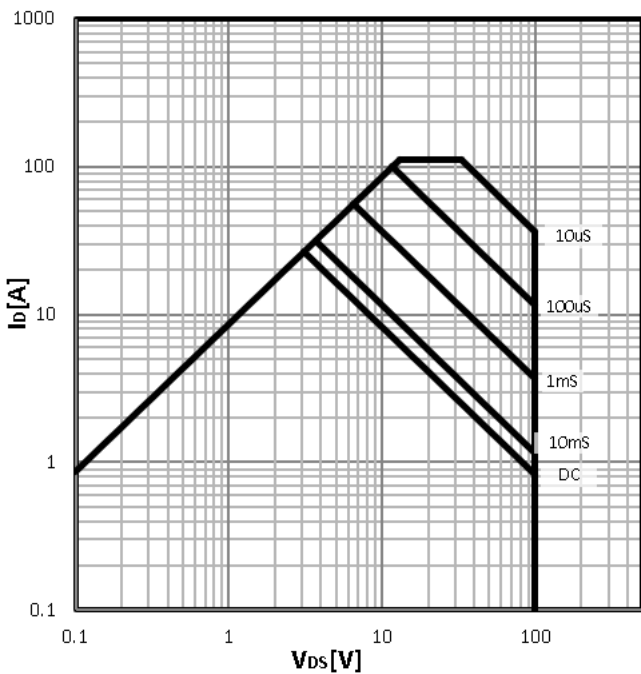
Power Dissipation
 $P_{tot}=f(T_c)$



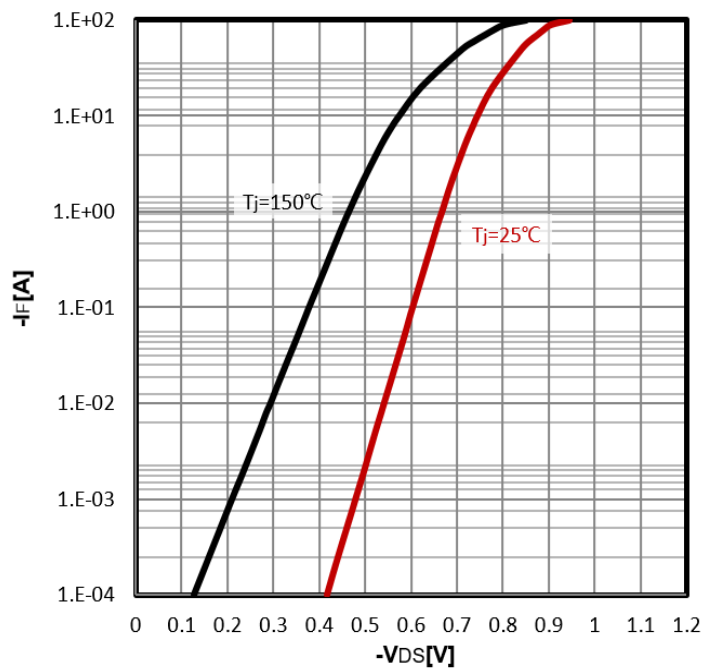
Maximum Drain Current
 $-I_D=f(T_c)$



Safe operating area
 $-I_D=f(-V_{DS})$

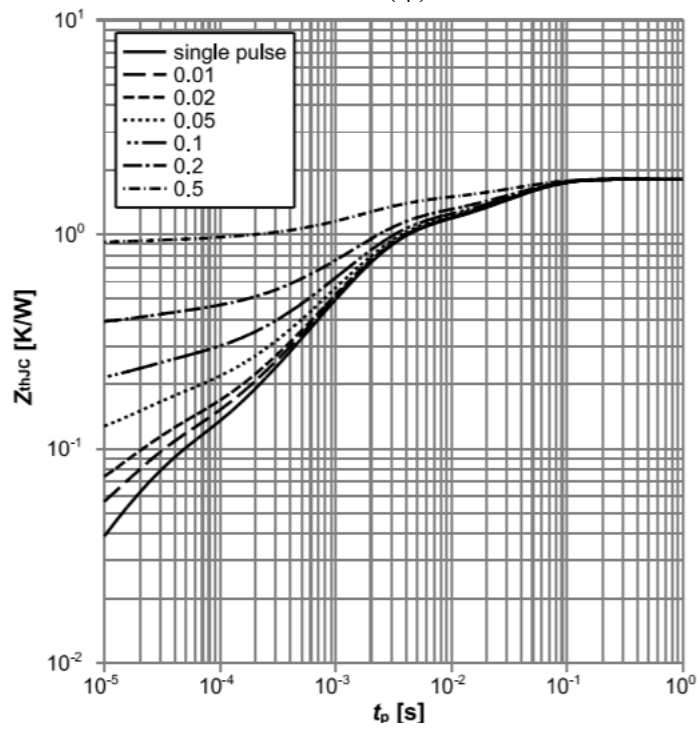


Body Diode Forward Voltage Variation
 $-I_F=f(-V_{DS})$



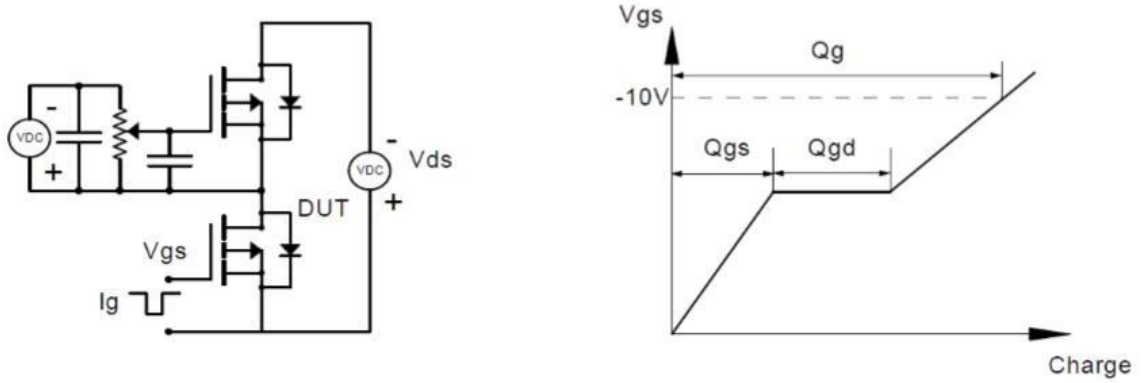
Max. transient thermal impedance

$$Z_{thJC} = f(t_p)$$

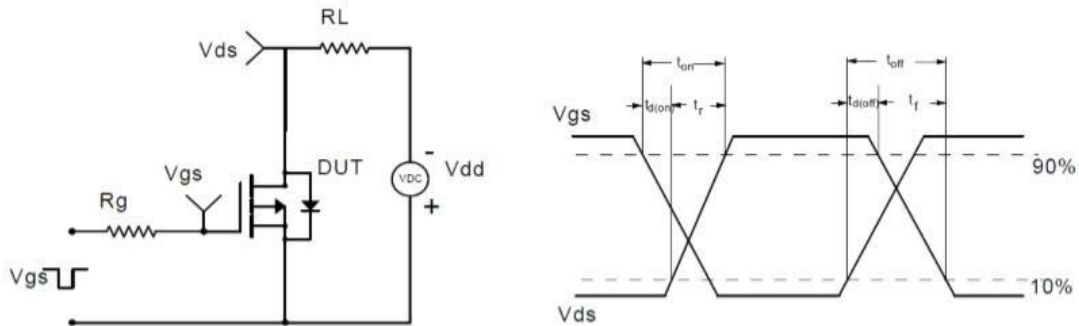


Test Circuit and Waveform:

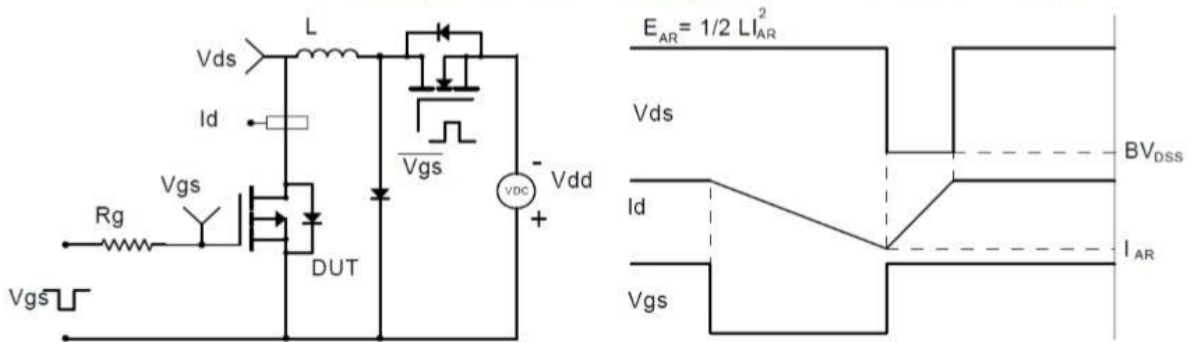
Gate Charge Test Circuit & Waveform



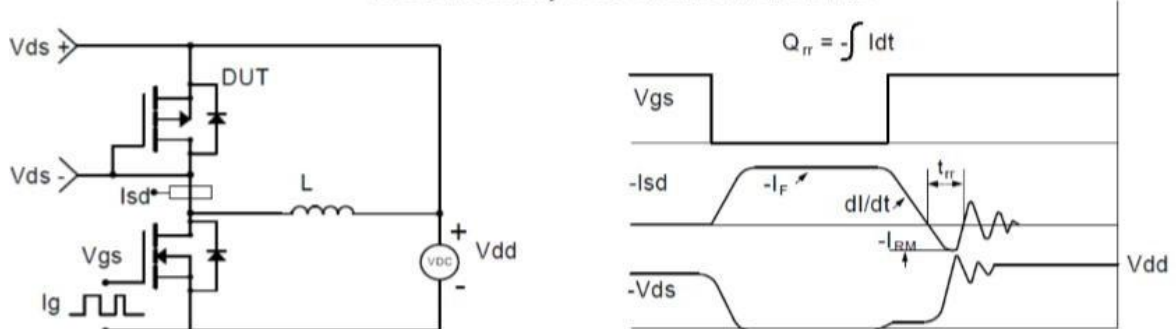
Resistive Switching Test Circuit & Waveforms



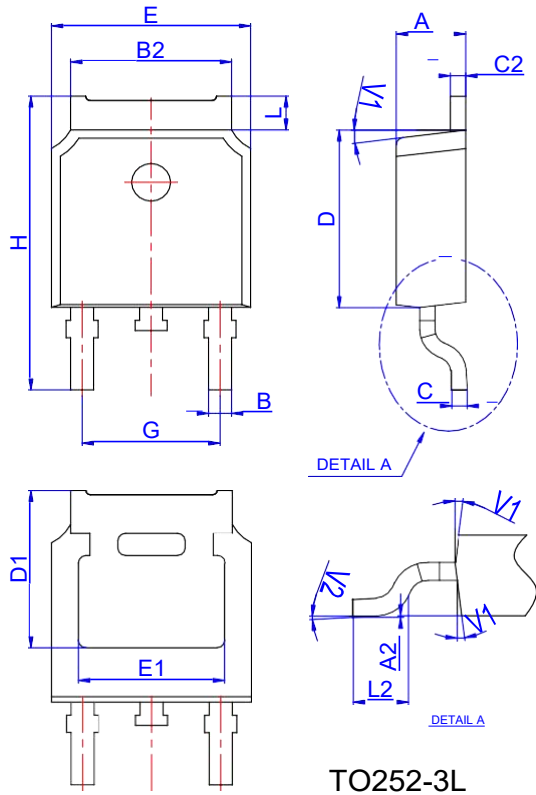
Unclamped Inductive Switching (UIS) Test Circuit & Waveforms



Diode Recovery Test Circuit & Waveforms

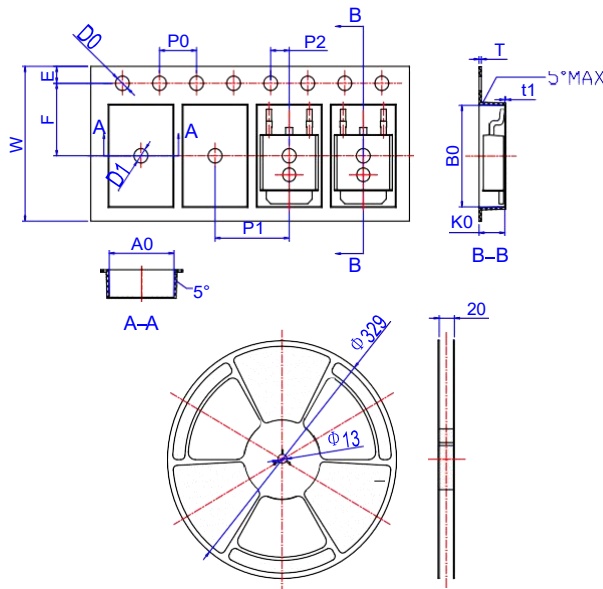


Package Mechanical Data TO252-3L



Ref.	Dimensions					
	Millimeters			Inches		
	Min.	Typ.	Max.	Min.	Typ.	Max.
A	2.10		2.50	0.083		0.098
A2	0		0.10	0		0.004
B	0.66		0.86	0.026		0.034
B2	5.18		5.48	0.202		0.216
C	0.40		0.60	0.016		0.024
C2	0.44		0.58	0.017		0.023
D	5.90		6.30	0.232		0.248
D1	5.30REF			0.209REF		
E	6.40		6.80	0.252		0.268
E1	4.63			0.182		
G	4.47		4.67	0.176		0.184
H	9.50		10.70	0.374		0.421
L	1.09		1.21	0.043		0.048
L2	1.35		1.65	0.053		0.065
V1		7°			7°	
V2	0°		6°	0°		6°

Reel Specification-TO252-3L



Ref.	Dimensions					
	Millimeters			Inches		
	Min.	Typ.	Max.	Min.	Typ.	Max.
W	15.90	16.00	16.10	0.626	0.630	0.634
E	1.65	1.75	1.85	0.065	0.069	0.073
F	7.40	7.50	7.60	0.291	0.295	0.299
D0	1.40	1.50	1.60	0.055	0.059	0.063
D1	1.40	1.50	1.60	0.055	0.059	0.063
P0	3.90	4.00	4.10	0.154	0.157	0.161
P1	7.90	8.00	8.10	0.311	0.315	0.319
P2	1.90	2.00	2.10	0.075	0.079	0.083
A0	6.85	6.90	7.00	0.270	0.271	0.276
B0	10.45	10.50	10.60	0.411	0.413	0.417
K0	2.68	2.78	2.88	0.105	0.109	0.113
T	0.24		0.27	0.009		0.011
t1	0.10			0.004		
10P0	39.80	40.00	40.20	1.567	1.575	1.583